

Specifications  
Messenger  
458640

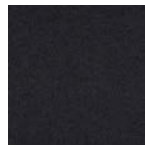
**maharam**



001 Balsa



007 Shadow



008 Bayou



024 Poppy



025 Mao



029 Onyx



031 Cloud



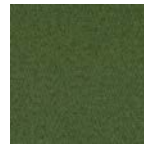
038 Depth



040 Nile



041 Azure



045 Cactus



046 Ice



048 Neon



050 Hydrangea



051 Lilac



053 Tangelo



054 Lumine



058 Snow



060 Peridot



061 Capri



062 Ultramarine



063 Squall



066 Cassis



067 Aster



069 Cherry



070 Vibrant



071 Satsuma



072 Maize



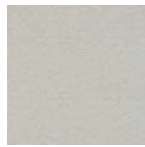
076 Fossil



077 Ash



078 Tusk



079 Oyster



080 Pensive



081 Husk



082 Fireside



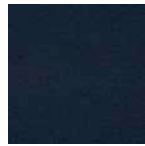
083 Chili



084 Robust



085 Beyond



086 Voyage



087 Everglade



088 Electric



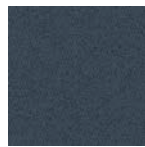
089 Blanch



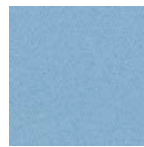
090 Longspur



091 Vireo



092 Dipper



093 Gale



094 Hunter



095 Lime

# Specifications

## Messenger

### 458640

**maharam**

#### Application

Seating, Systems, Upholstered Walls

Note: This textile is available as a made-to-order pillow.

#### Characteristics

Content: 78% Post-Industrial Recycled Polyester, 15% Polyester, 7% Nylon

Finish: Stain Repellent

Additional Finishes Available: Alta, Alta Food and Beverage, Antimicrobial Stain Resistant Finish with Impermeable Backing, Crypton, Nanotex, Nanotex with Impermeable Barrier

Backing: None

Width: 54" (137cm)

Bolt Size: 50 yards (46 m)

Weight: 14.2 oz/ly (440 gr/lm)

Country of Origin: USA

#### Price

Contact your sales representative for pricing.

#### Maintenance

W/S-Clean with water-based cleanser or mild, water-free dry cleaning solvent.



#### Testing

Abrasion: ASTM D4157, 100,000 double rubs Wyzenbeek

Note: Abrasion test results exceeding ACT Performance Guidelines are not an indicator of product lifespan.

Multiple factors affect fabric durability and appearance retention.

Acoustics: ASTM C423, 0.80 NRC

Flammability: AS/NZS 1530.3

AS/NZS 3837 Unadhered

ASTM E 84 Unadhered

BS 5852 Crib 5\*

CAL 117-2013

CAN ULC S102 Unadhered

EN 1021-1\*

EN 1021-2\*

EN 13501 Unadhered\*

GB/T 17591\*

ISO 5660 Unadhered

NFPA 260

UNI 9175\*

\*passes with additional treatment

Lightfastness: AATCC 16E, 40+ hours



Specifications  
Messenger  
458640

**maharam**

**Environmental**

Greenguard and Greenguard Gold Certified  
REACH Compliant  
Contains Recycled Content  
FR Free

**Warranty**

3 years: Indoor Seating  
3 years: Systems and Upholstered Walls.

© 2000 Maharam

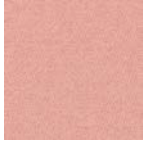
Complete product information at [maharam.com](http://maharam.com)  
800.645.3943

Specifications  
Messenger  
458640

**maharam**



096 Apple



097 Krill



098 Catalyst