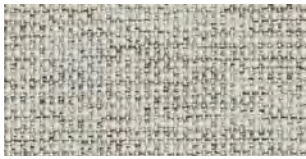


W
a
r
r
i
e
r

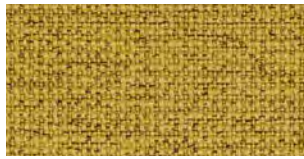


MOZART™

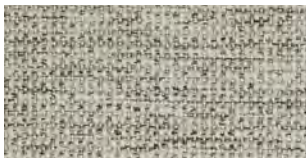
by Gabriel



61163



62061



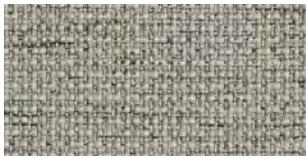
61206



62063



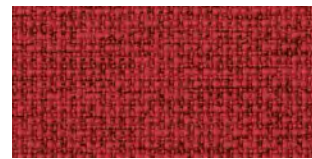
63076



61207



62065



64138



61211



63077



64139



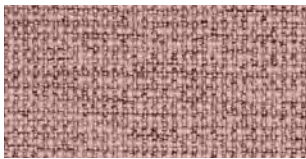
61208



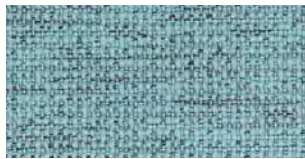
61146



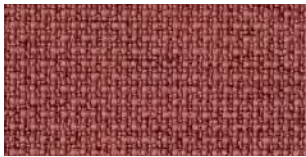
64140



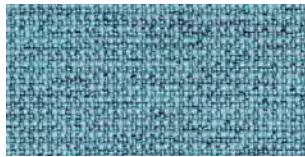
64135



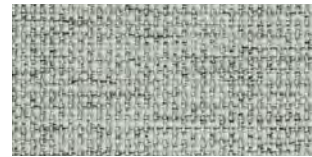
66175



64136



66010



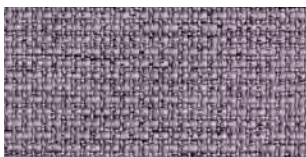
60186



64137



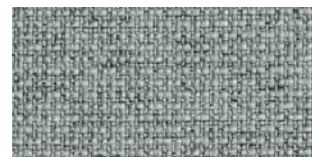
66159



64194



66136



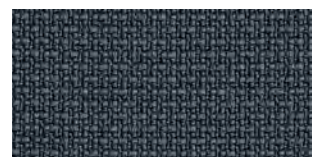
60188



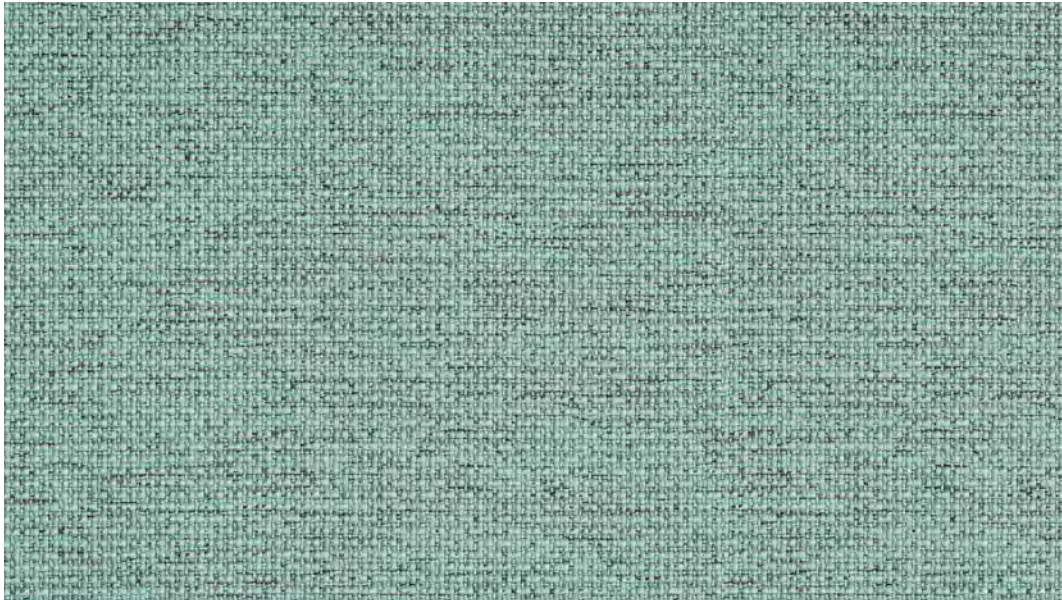
65106



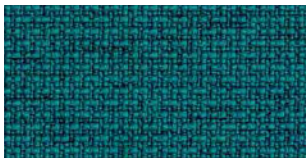
66160



60999



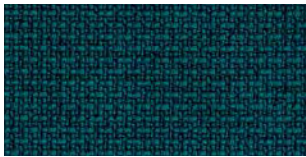
67062



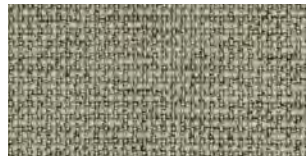
67066



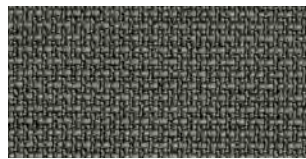
68146



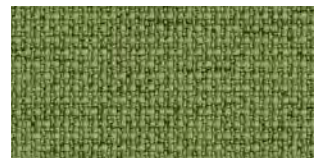
67033



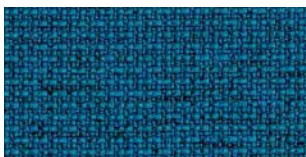
68139



68140



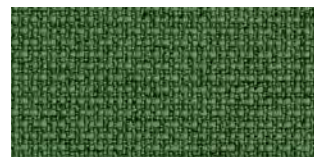
68143



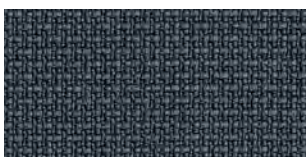
67063



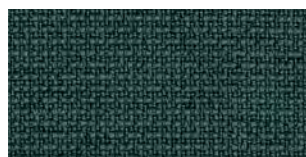
68141



68144



60189



68142



68145

MOZART™

Design no.		8625
Fields of application		contract · soft seating
Material	polyester	100%
Weight		600g/lm · [19.35 oz/lin.yd.]
Width		140cm · [55"]
Abrasion resistance	rubs · EN ISO 12947-2(Martindale)	80,000
Pilling	scale 1-5, max 5 · EN ISO 12945-2	4
Colour fastness to light	scale 1-8, max 8 · EN ISO 105-B02	5-7
	AATCC 16 Light fastness	pass
Colour fastness to rubbing	scale 1-5, max 5 · EN ISO 105x12 (wet/dry)	4-5/4-5
Flammability	EN ISO 1021 1&2	pass
	Flame retardant performance is dependent upon the foam used.	
Design/Colours	Cenk Kivrikoglu	

Subject to changes and colour differences

